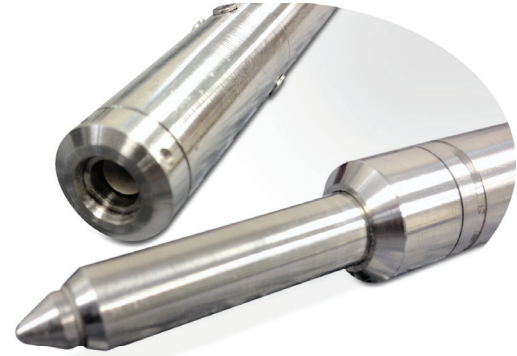


ELITE Wet Mate Electric (WME) Series

General Description and Advantages

- Pressure Balanced Oil Filled (PBOF)
- Wet Mate Electric Connector
- Design Life 25 Years
- Inconel Standard, Stainless and Titanium Available
- High Pressure Fittings With Metal Seals
- Two Barriers to Seawater Ingress
- Glass Sealed Header, No Welds



- Full Pressure Barrier Between Connector and Cable Termination
- For Use in Subsea XT's and Specialty Applications
- Plug and Receptacle Fully Protected in PBOF Environment

| Design Parameters | Materials and Performance |
|-------------------------------------|---|
| | Electric |
| Material Specification | Inconel Nominal, 316LSS, Titanium Available |
| Design Life | 25 Years |
| Number of Circuits | 3 Electrical |
| Design Pressure | 15,000 psi |
| Helium Leak – Pressure Header | $\leq 10^{-8}$ scc/sec |
| Test Pressure | 20,000 psi |
| Environmental Operating Temperature | 150°C |
| Voltage | 500 VDC |
| Amperage | 5A |
| Dimensions | .62" (15.8mm) Diameter |
| Mate Cycles | 50 Mate/Demate |

Hermetic Seal Corp

4232 Temple City Blvd • Rosemead, CA 91770, USA
Telephone: +1 626-443-8931 • Fax: +1 626-443-6610
www.ametekinterconnect.com